



Bespoke  
Handling  
Equipment

# Operating Instructions



## DTP04 (Ex)

### Side-Shift Drum Depalletiser

E-mail: [sales@sts-trolleys.co.uk](mailto:sales@sts-trolleys.co.uk)

Tel: +44 (0)1736 851050

Fax: +44 (0)1736 851023

The Side-Shift Drum Depalletiser is designed for lifting, lowering and transporting drums on and off pallets. The instructions in this manual should be adhered to at all times, failure to do so could result in minor or serious injury to the operator and/or other personnel.

### **Key safety requirements**

1. Do not use the unit unless you have read and fully understood the operation and maintenance manual.
2. This equipment is designed for use on level ground.
3. Only handle drums that are in a good condition. Should the lip or any other part of the drum be damaged, these should not be handled.
4. When not in use the equipment should be parked in a safe location; if the unit has brakes these should be applied.
5. This product is to be used by one operator at a time and they must be behind the unit at all times.
6. For equipment which lifts drums, do not transport the drum at unnecessary heights; the drum should be as close to the floor as possible at all times.
7. Do not allow other personnel to be in front of the unit when in use.
8. The safe working load (SWL)/rated capacity should not be exceeded in any circumstances.
9. The equipment should be inspected at regular intervals, decided by the operator's company, for signs of damage or defects.
10. The unit must be inspected at least annually or after any unusual event by a suitably competent person.
11. Ensure damaged or missing safety notices are replaced; these are available from STS.
12. The manual forces relating to the use of this equipment are relatively low; any doubts in this should be reported to STS.
13. If any operator is in any doubt of the correct suitability of the equipment or has any problem understanding the instruction manual then they should contact STS for technical support.
14. Installation of third-party equipment which affects the performance of the equipment requires the written permission of the manufacturer.
15. Upon delivery equipment should be inspected for transit damage. Any damage should be reported to STS and the equipment should be quarantined and not used.
16. If the unit supplied is the ATEX model, ensure earthing chains are securely fitted and are in contact with the ground at all times; also wheels should be kept clean and free from debris.
17. The manufacturer shall not be held liable in case of faults or accidents due to negligence, incapacity, installation by unqualified personnel or improper use.

## Initial setup and connecting to drums:

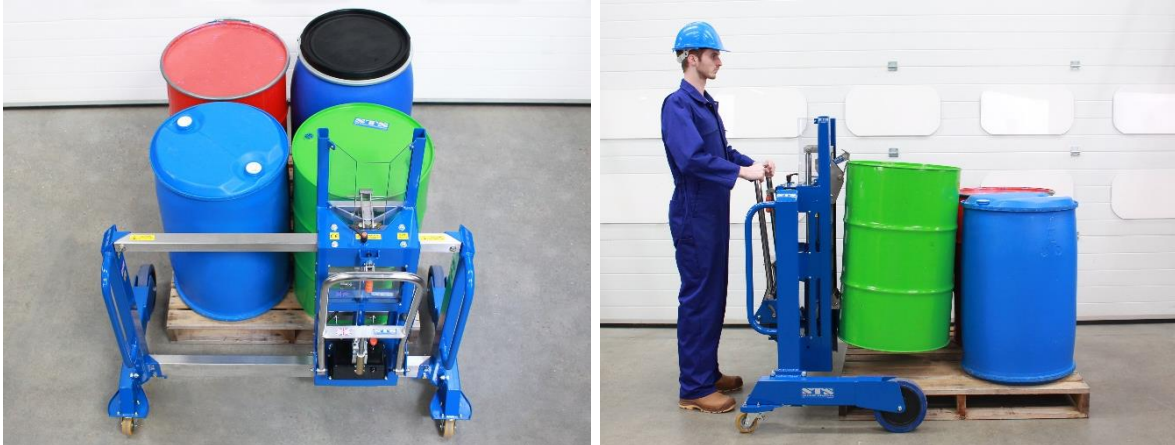
Each depalletiser is fitted with a universal drum catch which is adjustable in both height (vertical) and reach (horizontal). This unique adjustability means that each lifter can handle a wide variety of drum types and sizes commonly found in the workplace.



- Ensure the rack is lowered fully so that all the vertical lift stroke is available; this is done by turning the lowering lever anticlockwise.
- There are five rungs at which you can secure the drum catch, removing the lowest R-pin allows you to remove the catch from the rack and relocate it so that the catch is positioned below the drum lip you wish to connect to.
- Manoeuvre the depalletiser using the handles being sure to keep good posture; operators should move gently while manoeuvring, planning ahead in good time.
- The central lifter can be moved laterally left and right. To do this release the orange side-shift locking toggle. Line up the lifter body with the centreline of the drum and lock the lifter in position, again using the orange toggle.



- Lift the rack using the pump handle so the catch rises above the top lip of the drum.
- Push the unit forward so the top catch engages the drum.
- Lower the rack slowly using the lowering lever ensuring the top hook engages over the top lip of the drum and that the bottom toggle secures beneath the drum lip.
- The drum is now ready to be lifted.



### **Removing drums from pallets:**

- Ensure that the side-shift mechanism is locked before attempting to lift a drum (orange handle).
- Pump the hydraulic handle to raise the drum to the desired height.
- Remove drum from the pallet by gently pulling the depalletiser away.
- When clear of the pallet and transporting the drum, keep the drum as low to the ground as is practical.
- To place the drum down, simply turn the control lever anticlockwise locates on the top of the lifter. The rate at which the drum lowers is controlled by the amount that the lever is pulled.
- Once the drum is placed on the floor (or another pallet), continue to lower the rack until the catch goes slack, the operator can then reach forward and manually remove the hook from the drum.
- If the catch is lowered too much it is not possible to unhook the catch, in this instance raise the rack slightly by pumping the handle, the catch will go slack ready for unhooking.

## Universal drum catch variations

**WARNING** – Due to variations in the manufacture of drums it is important that the correct hook position is selected. Failure to do so could result in the catch disconnecting from the drum.

The universal drum catch has been designed so that a various number of positions can be used to fit different sized drums. By removing the top R-clip, the top hook can be turned over so that the sticker is upside down. This gives the top hook a further 5mm of reach. Changing the hole that the top catch is located in increases the reach by a further 10mm by each hole placement. The top hook must always be placed in the shortest possible position.

The following examples are for guidance only:



### **Steel Open-Top**

The top hook should be mounted with the labels inverted and in the bottom hole.



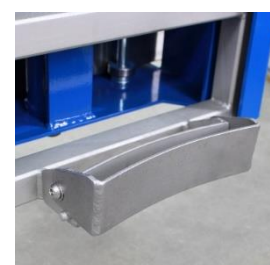
### **Most Drum Types**

The top hook should be mounted the correct way up and in the bottom hole.



### **MAUSER Open-Top**

The top hook should be mounted the correct way up and in the third hole.



### **Thrust Pad**

This pad is located at the bottom of the stainless rack and is designed for varying shaped drums. Folding out the pad keeps the drum more

## Table on the effect of changing top hook position and orientation

	Catch (Original)	Catch (Flipped)
Back hole (4 <sup>th</sup> )	0mm (200 litre steel setting)	+5mm
3 <sup>rd</sup> hole	+10mm	+15mm
2 <sup>nd</sup> hole	+20mm	+25mm
Front hole (1 <sup>st</sup> )	+30mm	+35mm

## Maintenance

Any maintenance needs to be carried out by a competent individual. The unit is designed to be low maintenance.

## Schedule

	Weekly	3 Monthly	Annually
<b>Brakes and Toggle</b>			
Test brakes and adjust if required	•	•	•
Check orange side-shift toggle grips cross beam (DTP04 only)		•	•
<b>Chassis and Superstructure</b>			
Inspect labels are legible and complete	•	•	•
Inspect all components for wear and damage	•	•	•
Inspect chassis for damage and visually inspect all welds for cracks		•	•
If the unit is ATEX rated ensure that the earthing chains are in contact with the floor and that the wheels are clean, free from debris	•	•	•
<b>Hydraulic Operations</b>			
Test hydraulic lift and lower function for correct operation	•	•	•
Check hydraulic oil level via sight glass, top up if below half sight glass		•	•
Inspect hydraulic seals for damage and leaks		•	•
Replace hydraulic oil (Shell Tellus 22 or equivalent)			•
<b>Agreed Performance Level</b>			
Carry out a load test with rated load, or if necessary with customer specified load			•
<b>Cleaning</b>			
Steam jets, degreasing agents and high-pressure cleaners should be employed with great caution to avoid degreasing components		•	•

## Hydraulics troubleshooting

Unit does not lift	Unit overloaded
Unit does not lift to full stroke	Pump is short of oil. Ensure rod is at bottom of stroke and top-up/refill with hydraulic oil. Shell Tellus 22 or equivalent, half sight glass.
Oil leaking from top of ram around chromed rod	Replace ram seals
Oil leaking from tank filler point	Filler bung damaged or unit over filled with oil

## **Decommissioning and disposal**

Final de-commissioning or disposal of the unit must be performed in accordance with the regulations of the country of use, meeting the countries regulations for disposal of hazardous materials. In particular, regulations governing the disposal of batteries, fuels and electronic and electrical systems must be observed.

## **Maintenance**

Any maintenance needs to be carried out by a competent individual. The unit is designed to be maintenance free.

- Before use inspect unit thoroughly for signs of damage.
- For cleaning it is recommended that if any degreasing agents or high pressure cleaners are to be used then they should be used with great caution as to avoid the degreasing of any mechanical components.

If you do not understand any part of this manual and/or need assistance, please contact us: Technical Support Line: +44 (0)1736 851050

Bespoke Handling Equipment Ltd.

Leedstown

Hayle

Penzance

TR27 6DS